

# TATE COUNTY SCHOOL DISTRICT

COLDWATER EAST TATE INDEPENDENCE STRAYHORN

# BACK <sup>to</sup> SCHOOL

## Safe Return-to-School Plan 2020-21

The Tate County School District is committed to the safety and wellbeing of our students, staff, and families. Tate County School District consulted with parents, teachers, health officials, community stakeholders, other school districts, MDH, MHSAA, and the MDE to better understand their concerns and seek counsel to ensure we were taking all precautions and following CDC guidelines. We have developed, and continue to refine our safe return to school plan. Every decision we've made is rooted in our commitment to the safety for all students and staff while providing equity and access to quality instruction during this uncertain time. The plan will be revised as needed according to guidelines.

## What Families Can Expect When We Return to School

Reopening of school is critical when many children and families are experiencing additional economic hardships, social isolation, and stressors. Schools are a critical component of communities and have tremendous impact on the health, well-being, growth, and development of students and families.



The health and safety of our students, staff, and families is of utmost importance. When the school year begins, on-campus school will look much different than in previous years due to the following health and safety measures. Plans will be updated as the situation evolves.

# Disclaimers



Social distancing is a challenge with the traditional school model due to a limited number of buses, limited classrooms, etc. Social distancing will be maintained to the greatest extent possible.

---

Tate County values each student and respects the family's health concerns during this pandemic; however, we desire to educate each child. Full-time virtual learning will be an option for students during the 2020-2021 school year. Virtual learning will allow students to remain enrolled in Tate County Schools while receiving teacher-facilitated virtual instruction. After completing Power School registration, parents can begin the process of registering for virtual learning by sending an email to their school counselor.

---

Due to the constant changes of the health situation of our county, state, and nation, frequent changes could occur throughout the year. Everyone must be prepared for intermittent closures. Parents need to have plans that can be activated if there is a school closure or if their children are not able to attend school because of a quarantine situation. Please make sure contact information is updated and correct in Power School.

# Optional Starts

## Traditional

- All students will go to school Monday through Thursday.
- All students will participate in learning from home on Friday.
  - Fridays are reserved for enrichment and remediation activities.
- High School students will be on a 4x4 block.

## Hybrid

- Students will alternate A and B days.
  - A will be Monday and Wednesday.
  - B will be Tuesday and Thursday.
  - Fridays are reserved for enrichment and remediation activities.
- Students will be divided by last name and address to ensure households are in school on the same days.

## Virtual

**\*Virtual Learning is an option offered to all students each nine weeks.**

- Wi-fi will be available in parking lots at each school.
- Google Classroom (Learning Management System) will be utilized.
- Staff will report to building on a daily basis unless under quarantine guidelines.
- Teachers will have office hours and a web page updated regularly to connect with students and parents.
- Teachers will be responsible for monitoring and documenting student progress.



## Attendance

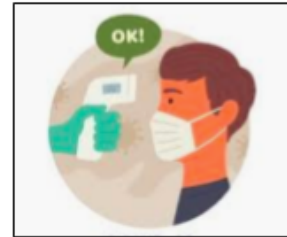
- In the event of an outbreak, the superintendent may be required to close a class, school, multiple schools, or the entire district to prevent further spread.
- If virtual learning must be implemented throughout the school year, students will be held accountable for assignments given during that time.

# Health and Safety

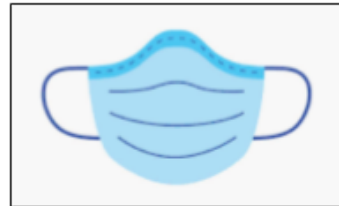
**Temperature screenings will be conducted daily.**

**Videos and social media will be used to educate families, students, and staff about the health and safety protocols.**

- It is requested that parents check for symptoms and check their child's temperature each morning before leaving for school. Families are encouraged to self-report symptoms of illness to the school.
- Students will be asked at the beginning of each day to confirm that they are not experiencing symptoms of COVID-19.
- School staff may conduct temperature checks and well-being checks as deemed necessary throughout the school day.
- Bus personnel will self screen before they start their route.
- Bus drivers will screen students before they are transported.
- Staff will be self-screened before they arrive on campus for the day.
- Car riders will be screened when they exit their car.
- Student drivers will be screened before entering the building.
- An isolation room will be designated for students exhibiting symptoms of COVID-19 while they wait on their parents.



- Visitors will be screened before they enter the building.
- Staff will be educated on the health and safety policies and protocols, and emotional and social concerns due to COVID-19.
- Mental health support will be available for students.
- Students will be encouraged to wear masks.
- Social distancing will be a challenge; therefore, it is strongly recommended that parents encourage use of masks for their children if age-appropriate. Masks are not required; however, masks can significantly reduce the possibility of a student being quarantined by the Mississippi State Department of Health for 14 days because of close contact at school with a confirmed COVID-19 case.
- All staff will be expected to wear a mask. Cloth mask must be routinely washed or disposable masks should be worn.
- Students will be encouraged to bring their own water bottles.
- Traditional water fountains will be replaced with bottle fill stations.
- Hand sanitizer will be available in every classroom.
- Hand sanitizing stations will be available in common areas.



- Every school will have access to a nurse, who will serve as the point of contact for addressing COVID-19 health questions and concerns.
- Students will be taught and reminded about proper handwashing and cough covering.

## School Facility



- All facilities will be deep cleaned before the return of students and staff, and buildings will receive a deep cleaning on a regular schedule.
- All facilities will also be disinfected on a daily basis.
- Signage will be located throughout the building reminding students about social distancing and what to do if they are showing symptoms.



# Transportation



## Bus Riders

- Social distancing on buses will be a challenge, parents are encouraged to drop-off and pick-up their child(ren) from school.
- Students will be required to wear a mask on the bus.
- If a student does not have a mask, the bus driver may provide one.
- Bus drivers will be required to wear masks.
- Each bus will be sanitized twice daily, and buses will be deep cleaned as frequently as possible.
- A seating chart will be developed to maintain as much distance as possible.
- Siblings will be asked to sit together in the same seat to allow more social distancing opportunities for students.
- Bus drivers will screen students before they are transported.
- A contaminated bus will be removed from service until it has been deep cleaned and disinfected.

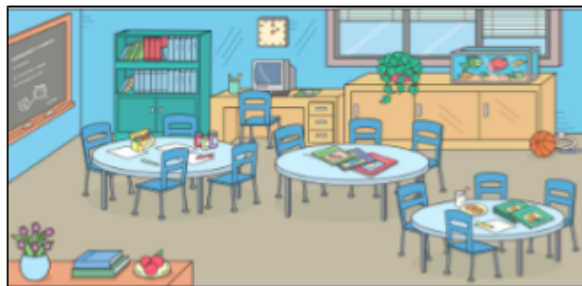
## Car Riders

- Car rider temperatures will be checked before students exit the car. If they read 100 degrees or higher they will not be allowed to stay on campus.
- Students who drive cars will have their temperature checked before entering the building. If they read 100 degrees or higher they will not be allowed to stay on campus. The office will notify the parents the child has been sent home.



# Operational Guidelines

- Daily procedures may be altered on each campus to promote social distancing.
- Supplies to be used at school will be provided. The use of shared materials in class will be limited. Each student's supplies will be stored in individually labeled containers.
- Teachers may rotate and students may stay in the same classroom all day when feasible. If classes change, release will be staggered.
- There will be minimal movement inside the classroom. Group work will be limited in order to promote social distancing.
- Students will have assigned seating and should all face in the same direction in class when feasible.
- The number of students entering and using restroom facilities at one time will be reduced to ensure social distancing.
- Teachers and staff will sanitize their rooms routinely and whenever there is a transition of students.
- Students will not be allowed to congregate in common areas.
- At the end of the day, schools will stagger their dismissal to buses and car lines.
- There will be a district point of contact for addressing COVID-19 policy questions and concerns. A designated email is [COVID19@tcsdms.org](mailto:COVID19@tcsdms.org).



## Academic Instruction

- TCSD will provide all textbooks/workbooks to students.
- TCSD will make available digital resources that accompany the textbook.
- TCSD will provide traditional instruction and virtual learning instruction using google classroom.
- TCSD will provide early diagnostic screening to determine student readiness for grade level instruction.
- The Mississippi Department of Education has given school districts the flexibility to adjust the amount of time that students spend in the classroom each day. Tate County Schools will reduce the amount of instructional time in order to allow more time for cleaning and alterations of daily procedures to promote social distancing.

## Special Services

Due to the highly individualized nature of accommodations, all services will be managed through the IEP process with the IEP team.

## Social Gatherings

- Meet the Teacher Night is cancelled until further notice.
- Recess and breaks will follow plans that reduce the number of students in any one location at the same time whenever feasible.
- Playground equipment will be avoided.
- All field trips will be virtual until further notice.
- We will follow all rules and recommendations from the Mississippi High School Activities Association.
- CDC guidelines, including social distancing, will be referenced for all assemblies.







## Child Nutrition

<u>Breakfast</u>	<u>Lunch</u>
<ul style="list-style-type: none"><li>Kindergarten - 12th grade will be grab and go meals students take to their classrooms.</li></ul>	<ul style="list-style-type: none"><li>K-1st grade will eat in the cafeteria.</li><li>For 2nd-6th grade, meals will be delivered to their classrooms.</li><li>7th-8th grade will eat in the cafeteria.</li><li>9th-12th grade will be grab and go meals students take to their classrooms.</li></ul>

- Cafeterias and kitchens will be cleaned frequently throughout the school day.
- Social distancing will be promoted in the serving lines and at cafeteria tables.
- All desks will be wiped down with disinfectant before and after each meal.
- Gloves will be provided for staff when students are eating in the classroom.
- Students will be encouraged to use sanitizer after lunch.
- Parents are encouraged to add money to student accounts using the myschoolbucks app.

## Parent/Guardian Support

- Parents should provide basic school supplies to be used at home.
- Parents are strongly encouraged to check their child's temperature before leaving home.
- Please keep children at home when symptoms are noticed during the morning health check.
- Please provide transportation to and from school when feasible.
- When checking in a student late or leaving early for the day, the parent will need to call the office upon arrival. The office will escort the student to and from the vehicle.
- If there is a confirmed case of COVID-19 in your household, please report it to school officials immediately.

# Visitors

- Parents are not allowed to walk students to classrooms.
- Only essential visitors/vendors will be allowed on campus.
- All visitation must be scheduled through the office ahead of time.
- All visitors will be screened upon arrival before entering the building.
- All visitors will be required to wear masks/face coverings.

